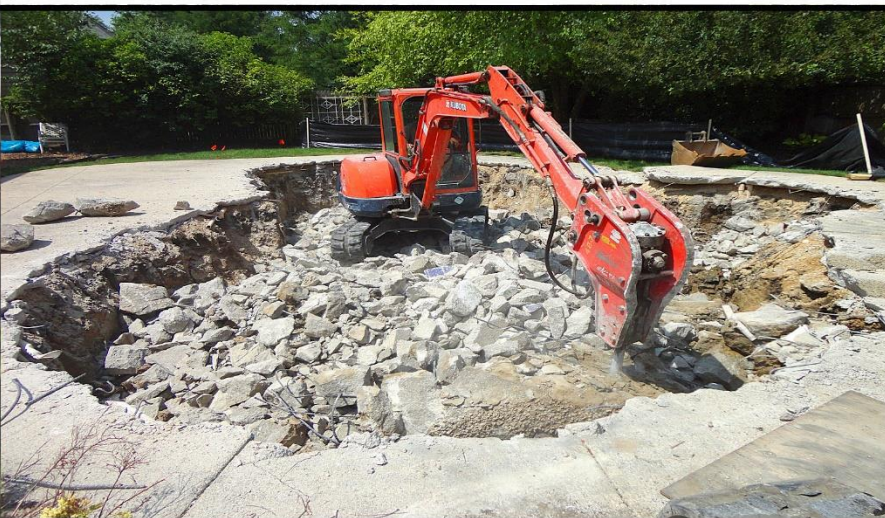




POOL REMOVALS

inground & above ground



GET IT OUT!



A swimming pool in disrepair can be a real serious burden until now! No question about it, it is cheaper to remove a swimming pool than to repair and maintain it. The costs associated with pools are only getting more expensive. Mack Land, LLC, Landscape Architects & Contractors, is Chicagoland's premier pool removal contractor. Mack has developed a streamlined, low impact and efficient process to remove swimming pools for affordable prices. Check out our pool removal section of our website at macklandllc.com for more information or call us 847.602.0024.

The cost of the pool demolition is typically recovered instantly because of the added value to the property. In addition, making the property marketable to a broader market.



847.602.0024
macklandllc.com



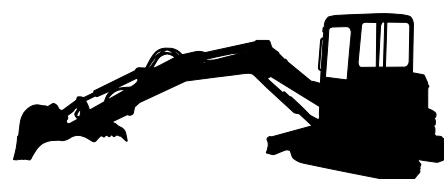
POOL REMOVAL GUIDE TABLE OF CONTENTS

I. SERVICE AREA.....	PG.2
II. REASONS TO REMOVE YOUR POOL TODAY	PG.3
III. WE ARE THE PREMIER POOL REMOVAL CONTRACTOR	PG.4
- Be Aware and Compare	
IV. LOW IMPACT EQUIPMENT	PG.5
- Types of removal equipment	
V. TYPES OF POOL REMOVALS.....	PG.6
- Typical scope of services	
VI. OUR PROCESS.....	PG.7
- Average Cost	
- Price Comparison	
VII. MACK LAND LLC LOW IMPACT POOL REMOVAL ADVANTAGES.....	PG. 8
- Safety, Priority Number One	
- Common Mistakes in Pool Removals	
VIII. LOW IMPACT PARTIAL REMOVAL PROCESS	PG.9
XI. FILL MATERIAL	PG.10
- Common Questions About Pool Removals	
XII. POOL REMOVAL SPECIFICATIONS.....	PG.11-13
XIII. BEFORE AND AFTER PORTFOLIO	PG.13-16

PRO REMOVAL TIP



ELIMINATE THE SAFETY RISK
Pools in disrepair are a safety risk!



MACK LAND, LLC - SERVICE AREA

A swimming pool in disrepair can be a serious burden. Until now! No question about it, it is cheaper to remove a swimming pool than to continually repair and maintain it. The costs associated with owning and maintaining a pool are increasing. Mack Land, LLC is the premier pool removal contractor. Mack Land has developed a streamlined, low impact, efficient and professional process to remove your swimming pool for an affordable price.

SERVICE AREA

- Northern IL – Chicagoland and the surrounding suburbs
- Southern WI – Kenosha to Milwaukee
- Central CO – Denver Metro and surrounding areas

REASONS TO REMOVE YOUR POOL TODAY



Reduce Stress and Enjoy your Back Yard

- A pool in disrepair is a stressful situation
- Neighbors may be complaining, and you may start receiving letters from the City or Village



Save Money

- Property Tax Reduction – Pools are considered taxable usable space
- Reduce Your Home Owners Insurance – Pools are a safety liability
- Lower Your Monthly Utility Costs – Energy costs are consistently rising
- Reduce Your Financial Burden – Continually repairing a pool adds up quickly



Increase Real Estate Value

- Gain a larger yard with more usable space and a more marketable space for realtors to sell
- Houses without pools appeal to a broader market
- Houses being sold “as-is” with a pool in disrepair will decrease the value of the home more than it will cost to remove it. Surrounding property values may be negatively affected as well.



Reduce Your Liability (Risk of Accidental Drowning and Serious Injuries)

- The CDC reports that between 2005 and 2014, an average of 3,536 unintentional drownings occurred. Of those, 1 in 5 are children 14 years old and younger.
- The largest age group of reported unintentional drownings to the CDC are children between the ages of 1 and 4.
- Most drownings occur in home swimming pools.
- <https://www.cdc.gov/homeandrecreationalafety/water-safety/waterinjuries-factsheet.html>



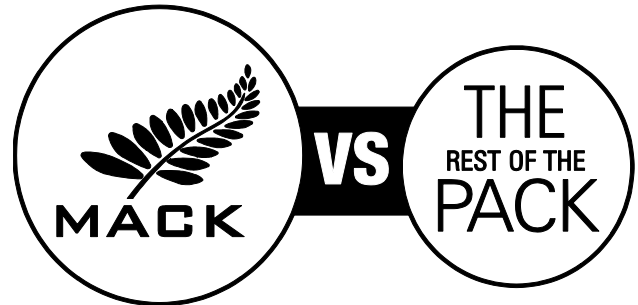
Public Pools are like Water Parks

- Public pools are up-to-date with latest safety features such as shallow pools for toddlers
- Public pools increase social interaction among children and parents making a community stronger
- Your taxes are paying for the public pools so why not use them

WE ARE THE PREMIER POOL REMOVAL CONTRACTOR

Tired of fixing that old pool? You might be surprised that removing your pool may add value to your property and save you a lot of money. Mack Land, LLC is an expert in affordable pool demolition and landscape restoration projects. We are committed to finding pool removal solutions that minimize damage to the surrounding landscape and paved surfaces. We minimize our impact by protecting sensitive areas and use low impact equipment. Give us a call today for a quote.

BE AWARE **AND COMPARE**



REGISTERED

We have registered Landscape Architects and Contractors on staff that can handle irrigation, brick pavers, and landscape issues.

YES

NO

EXPERIENCE

Mack has removed more than 100+ pools throughout Illinois, Mid and Southern Wisconsin, and Denver Metro, Colorado.

YES

NO

LOW IMPACT PROCESS

Mack has created specific processes to efficiently demolish swimming pools with lower impact to your property.

YES

NO

TIME SENSITIVE

Mack will complete the project in a timely manner and is a one stop shop for all aspects of the demolition and restoration.

YES

NO

INSURED AND BONDED

Mack Land is fully insured/bonded and has the proper credentials to obtain permits or resolve permit issues.

YES

NO

PROFESSIONAL

Mack Land can provide a closure report documenting the process from start to finish.

YES

NO

LOW IMPACT EQUIPMENT

MACK LAND, LLC USES A VARIETY OF EQUIPMENT

With are focus on low impact demolition, we prefer to use lighter, yet powerful equipment to accomplish our removals. These are just some of the machines we use on the various types of pool removals we regularly preform.



Bobcat E35 Compact Excavator

We use this versatile excavator for most jobs to keep the impact low to the areas surrounding demolition site. With our experienced operators it's capabilities are endless.

Specs: 6 ft² Weight: 8,000 lbs



Bobcat T190 Skid Steer

Versatile, compact, and quiet. Used for moving fill dirt and multiple other applications.

Specs: 4.6 x 4.4 ft Weight: 7,775 lbs



John Deere - 6 Wheel Gator

This six-wheeler allows us to bring in all our tools and supplies in and out as needed with minimal impact to the surrounding property.

TYPES OF REMOVALS

Full In-Ground Pool Removal

Pool is completely demolished and removed offsite and the area is restored to lawn. For home owners that may have plans for a home addition or garage in the same area as the pool. No concrete will remain onsite.

Low Impact Pool Removal

All plastics and metals associated with the pool get hauled away and recycled. All concrete associated with the pool is completely demolished and processed into 8" fracture concrete gravel similar to PGE and used as fill. Pool area is restored to lawn. This method is lower impact and more cost effective because less has to be hauled in and out to fill in the pool.

Basic Pool Removal

Bottom of pool is perforated with holes for water to drain and sides of the pool are removed 24" below final grade. Pool area is restored to lawn.

Above Ground Pool Removal

Pool will be completely disassembled, hauled away and area will be restored to lawn.

TYPICAL SCOPE OF SERVICE FOR MOST POOL REMOVALS

- Obtain all permits, provide drawings as needed, and pay all permit fees
- Call in a Utility Locate
- Pump out pool water
- Protect trees as needed
- Remove and reinstall fence for access
- Saw cut pool deck away from any concrete to remain
- Disconnect electric associated with the pool at main circuit breaker in house
- Disconnect gas line – typically capped at gas meter
- Demolish/remove swimming pool
- Import and compact clay fill material
- Import and distribute 6" of top soil over the entire disturbed area
- Seed and install erosion control blanket
- Repair irrigation as needed

PRO REMOVAL TIP



Conserve Clean Water

There is a shortage of clean water in the world!



OUR PROCESS

The process starts with two on staff landscape architects that work through all the various facets of your pool removal project such as: obtaining the permits, tree removals, irrigation conflicts, and can design build your future patio or landscape your entire back yard.

Our process goes above and beyond the typical village, city or county codes for pool removals. Most pool removal codes just require the bottom of the pool be perforated and the sides of the pool be removed 24" below grade, what we call a basic pool removal. Mack Land, LLC has developed the low impact method to complete pool removals in a safe and timely minor while reducing impact to your property.

The one thing that is significant about our pool removal process is that we are processing all concrete associated with the pool into a structural fill material classified as PGE, 8" minus recycled fractured concrete gravel with fines. This material is often used for sub base under public roads. Because we process the concrete associated with the pool into fill material, also called our low impact method, it reduces heavy truck loads of concrete out and then heavy truck loads of fill back in reducing trauma to your property and public roads.

The right equipment and the right size equipment is extremely important. Mack prefers to use two rubber tracked backhoe excavators that have an operating weight of around 12,000 lbs to complete the pool demolition work. Using a backhoe is key to completing the project safely and quickly. A skid steer/Bobcat can easily get stuck in the deep end of the pool or get damaged while removing the pool side walls because the machine does not have the reach to keep a safe distance. Most under qualified contractors will use a skid steer and say they have done it before but they will be risking their safety, and may struggle and cause unnecessary damage to their machine. There are also a lot of other contractors, like excavation contractors, that will give you a great price but will come with a 26,000 lb machine with steel tracks and cause unnecessarily trauma to your property and not worry about it because it is not their job to restore your yard.

Having the right equipment and the having the right approach are key to the success of the project.

AVERAGE COST OF A POOL REMOVAL

	GOOD ACCESS (10' WIDTH)	LIMITED (6' WIDTH)	POOR ACCESS
Full Pool Removal	\$10 – 12K	\$12 – 16K	\$20K and up
Low Impact Pool Removal	\$7 – 10K	\$10 – 14K	\$15K and up
Basic Pool Removal	\$7 – 9K	\$7 – 12K	\$12K and up
Above Ground Pool Removal	\$1.5 – 3K	\$3 – 6K	\$4 – 6K

COMPARING PRICES

Comparing apples to apples is just about impossible. In most cases we provide a scope of services that you would have to go multiple contractors to get the same scope of work completed. This is something anyone can do, but to do it correctly in a timely manner you need to have the right equipment and experience. Anyone can fill in hole, but the difference is the in the possibility of settling and impact/trauma to your property by the equipment being used. An excavation company may be cheaper, but they are not going to restore damage to your yard and will likely want to use over kill equipment causing unnecessary trauma to your property. Other landscape companies do not have the equipment or demolition knowledge to complete the project in safe timely manner without future issues.

MACK LAND LOW IMPACT POOL REMOVAL METHOD ADVANTAGES

- Mack operates in a timely safe professional manner and is also a landscape design build contractor.
- Mack is a one stop shop to remove a swimming pool and restore your back yard to an aesthetically pleasing usable space.
- We mitigate the impact this process has on your property.
- Mack will respect your trees and other plants.
- By using the concrete as fill, we reduce heavy truck loads of concrete out and back in with fill dirt.
- The processed fill concrete, PGE – 10" recycled fractured concrete gravel with fines, acts like a stable drainage layer improving water infiltration in the area.
- Because the pool concrete is processed in to PGE, it can be easily removed as needed for future addition.

MACK LAND - SAFETY, PRIORITY NUMBER ONE

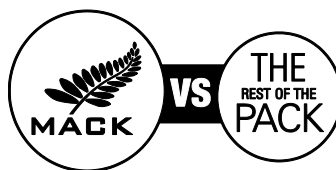
We pride ourselves with keeping a safe and secure job site at all times.

- Our concrete cutting is always done by wet cutting, which eliminates flying debris and dust.
- Safety gear worn by all Mack Land employees while on site.
- Safety Fence, to keep people out of the job site and safe from harm.
- Road-side traffic control, eliminates any risk of accidents while moving machinery or fill dirt to and from the job site to the street.

COMMON MISTAKES IN POOL REMOVALS

- The biggest mistake is hiring a company that is not qualified or trying to attempt it yourself.
- It is very possible to create unforeseen problems in future by leaving any part of the pool intact.
- It is extremely easy to have an inexperienced machine operator fall in the pool with their machine and get hurt if they do not respect the danger.
- Contractors or home owners without experience demolishing vertical walls will likely damage the equipment they are using or get hurt.
- A bobcat or a skid steer is not a good machine to demolish a pool with.
- Some contractors try and use over kill equipment causing unnecessary impact your property and roads.
- Hiring someone that will take forever to complete the project.
- Having the wrong strategy to complete the project.
- Choosing the wrong access route that will cause unnecessary impact to property.
- Accessing pool area without protecting or avoiding sensitive trees.
- Using sod instead of seed.

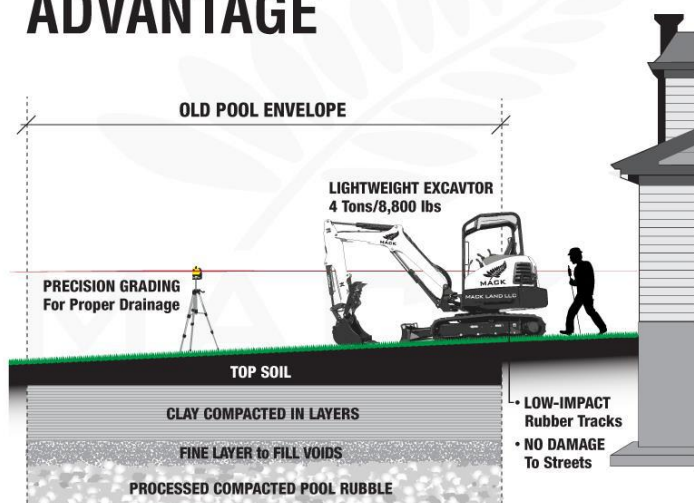
BE AWARE AND COMPARE



LOW IMPACT PARTIAL POOL REMOVAL

When Mack Land LLC removes your pool, we bring the ground back to its native condition. We break up the pool bottom for proper drainage and compaction. This process ensures for zero settling issues and various other problems that can occur if the removals aren't preformed in this manner. We strongly suggest that you remove the entire pool for the best possible ground conditions. As you can see our competitors don't stack up with Mack Land.

MACK LAND LOW IMPACT ADVANTAGE



DON'T MAKE POOL REMOVAL MISTAKES IT COSTS LESS TO DO IT RIGHT THE FIRST TIME!



FILL MATERIAL

Mack Land, LLC uses local fill dirt from residential projects only in compliance with all IL, WI, CO, and Federal EPA Codes. Mack also inspects and rejects loads of dirt that are not suitable. We make sure you are getting local, uncontaminated fill dirt that has the right soil structure to reduce settling issues.

COMMON QUESTIONS

Settling is the most common question asked. To date Mack Land, LLC has never had an issue with settling on a pool removal. Why? Because we fill in thin even layers and compact it evenly as we fill the pool in.

How long will it take?

Most in ground pool removals are completed in 3-7 days. Above ground pool removals are completed in one day.

Who gets the permits?

Mack Land, LLC will obtain all permits and pay all permit fees as part of our services.

How do we get started?

Mack Land, LLC will start the permit process with a signed contract and a copy of your plat of survey.

What is PGE?

PGE is a regional classification of coarse gravel. PGE is 6-10" minus recycled fractured concrete gravel with fines suitable for use as sub base for roads or for general structural fill. Mack Land, LLC will process all concrete associated with the pool into PGE and use it as fill material.

What is better sod or seed?

Seed is by far the best way to go. Grass grown from seed will develop a more drought tolerant root system and blend into your existing lawn better. Also with sod it very possible to get grubs and other pests from the sod farm.

When do you need the project deposit?

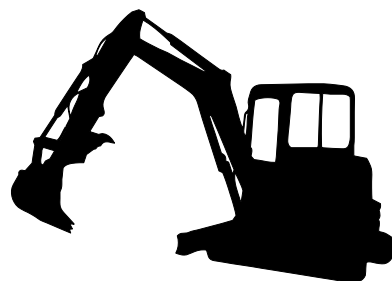
Mack Land, LLC prefers to pick up the deposit check in person after the permits are approved. Mack will deliver the permits and pick up the deposit check at that time. The remaining balance is due on completion.

PRO REMOVAL TIP



Reduce West Nile Mosquito Breeding Grounds

Abandoned pools are the ideal spot for mosquitoes to breed



SPECIFICATIONS - FULL CONCRETE REMOVAL

Full Pool Removal Specification (All concrete to be hauled off site)

1. Call in a Utility Locate "Julie" 1 week prior to start
2. Install plywood and/or wood chips to protect access path as needed
3. Pump out existing pool water and discharge to curb or on property
4. Safely disconnect and remove all pool utilities, gas and electric
5. Demolish and haul off concrete pool bottom
6. Demolish pool sides and haul off all concrete
7. Demolish pool deck and haul off all concrete
8. Import fill, distribute and compact fill material
9. Import pulverized topsoil as needed
10. Grade entire disturbed area (all areas will be graded with positive drainage away from all structures)
11. Seed all disturbed areas with Kentucky Bluegrass mix with DS-75 Erosion Control (straw blanket)
12. Remove plywood and/or wood chips along access path

NOTE:

ALL DEMOLISHED POOL CONCRETE WILL BE HAULED AND DISPOSED OF OFFSITE. ALL PLASTICS, FIBERGLASS AND METAL WILL BE REMOVED OFF SITE AND RECYCLED.

SPECIFICATIONS - LOW IMPACT CONCRETE

Low Impact Concrete Pool Removal Specification (Concrete to remain on site)

1. Call in a Utility Locate "Julie" 1 week prior to start
2. Install plywood and/or wood chips to protect access path as needed
3. Pump out existing pool water and discharge to curb or on property
4. Safely disconnect and remove all pool utilities, gas and electric
5. Break up and pulverize pool bottom into 10" minus recycled fractured concrete fill
6. Break up pool sides and pulverize pool sides into 10" minus recycled fractured concrete fill
7. Break up pool deck and pulverize pool deck into 10" minus recycled fractured concrete fill
8. Compact all fractured concrete in layers
9. Import fill, distribute and compact fill material
10. Import pulverized topsoil as needed
11. Grade entire disturbed area (all areas will be graded with positive drainage away from all structures)
12. Seed all disturbed areas with Kentucky Bluegrass mix with DS-75 Erosion Control (straw blanket)
13. Remove plywood and/or wood chips along access path

NOTE:

ALL DEMOLISHED POOL CONCRETE WILL BE PROCESSED INTO PGE LIKE MATERIAL TO BE USED AS STRUCTURAL FILL. ALL PLASTICS, FIBERGLASS AND METAL WILL BE REMOVED OFF SITE AND RECYCLED.

SPECIFICATIONS - BASIC CONCRETE

Basic Pool Removal (Floor is perforated and sides are removed 24" below grade)

1. Call in a Utility Locate "Julie" 1 week prior to start
2. Install plywood and/or wood chips to protect access path as needed
3. Pump out existing pool water and discharge to curb or on property
4. Safely disconnect and remove all pool utilities, gas and electric
5. Break up pool bottom/floor for drainage
6. Remove sides of pool a minimum of 24" below final grade
7. Break up pool deck and pulverize pool deck into 10" minus recycled fractured concrete fill
8. Compact all fractured concrete in layers
9. Import fill, distribute and compact fill material
10. Import pulverized topsoil as needed
11. Grade entire disturbed area (all areas will be graded with positive drainage away from all structures)
12. Seed all disturbed areas with Kentucky Bluegrass mix with DS-75 Erosion Control (straw blanket)
13. Remove plywood and/or wood chips along access path

NOTE:

ALL PLASTICS, FIBERGLASS AND METAL WILL BE REMOVED OFF SITE AND RECYCLED.

SPECIFICATIONS - BASIC IN-DOOR

Basic In-Door Pool Removal (Floor is perforated)

1. Call in a Utility Locate "Julie" 1 week prior to start
2. Seal off all openings and provide dust control
3. Create access – typically remove sliding glass doors
4. Pump out existing pool water and discharge to curb or on property
5. Safely disconnect and remove all pool utilities, gas and electric
6. Remove pool liner and dispose offsite
7. Break up pool bottom to provide drainage
8. Remove pool walls a minimum of 18" below grade or entirely if fiberglass or steel walls and dispose offsite
9. Import structural fill materials and compact in layers
10. Prep for new concrete floor

SPECIFICATIONS - BASIC ABOVE GROUND

Above Ground Pool Removal Specifications

1. Call in a Utility Locate "Julie" 1 week prior to start
2. Pump out existing pool water and discharge to curb or on property
3. Safely disconnect and remove all pool utilities, gas and electric
4. Remove pool liner and dispose offsite
5. Disassemble pool and recycle all materials
6. Import topsoil
7. Seed and blanked disturbed area

NOTE:

ALL PLASTICS, FIBERGLASS AND METAL WILL BE REMOVED OFF SITE AND RECYCLED.

SPECIFICATIONS - BASIC LINER/FIBERGLASS

Basic Liner/Fiberglass Pool Removal (Floor is perforated)

1. Call in a Utility Locate "Julie" 1 week prior to start
2. Install plywood and/or wood chips to protect access path as needed
3. Pump out existing pool water and discharge to curb or on property
4. Safely disconnect and remove all pool utilities, gas and electric
5. Remove pool liner and dispose offsite
6. Break up and pulverize pool bottom into 10" recycled fractured concrete fill
8. Break up pool deck and pulverize pool deck into 10" minus recycled fractured concrete fill
9. Compact all fractured concrete in layers
10. Import fill, distribute and compact fill material
11. Import pulverized topsoil as needed
12. Grade entire disturbed area (all areas will be graded with positive drainage away from all structures)
13. Seed all disturbed areas with Kentucky Bluegrass mix with DS-75 Erosion Control (straw blanket)

SPECIFICATIONS - LOW IMPACT LINER/FIBERGLASS

Low Impact Liner/Fiberglass Pool Removal Specification (Concrete to remain on site)

1. Call in a Utility Locate "Julie" 1 week prior to start
2. Install plywood and/or wood chips to protect access path as needed
3. Pump out existing pool water and discharge to curb or on property
4. Safely disconnect and remove all pool utilities, gas and electric
5. Break up and pulverize pool bottom into 10" recycled fractured concrete fill
6. Remove and dispose of pool liner
7. Remove fiberglass pool sides and dispose offsite
8. Break up pool deck and pulverize pool deck into 10" minus recycled fractured concrete fill
9. Compact all fractured concrete in layers
10. Import fill, distribute and compact fill material
11. Import pulverized topsoil as needed
12. Grade entire disturbed area (all areas will be graded with positive drainage away from all structures)
13. Seed all disturbed areas with Kentucky Bluegrass mix with DS-75 Erosion Control (straw blanket)
14. Remove plywood and/or wood chips along access path

NOTE:

ALL DEMOLISHED POOL CONCRETE WILL BE PROCESSED INTO PGE LIKE MATERIAL TO BE USED AS STRUCTURAL FILL. ALL PLASTICS, FIBERGLASS AND METAL WILL BE REMOVED OFF SITE AND RECYCLED.

FULL CONCRETE REMOVAL



LOW IMPACT CONCRETE REMOVAL



LOW IMPACT LINER/FIBERGLASS REMOVAL



BASIC IN-DOOR REMOVAL



BASIC ABOVE GROUND REMOVAL

